

BUG MAKES

Make a snug as a bug hotel



Autumn is approaching and now is the time to think about taking care of the wildlife around us to help them through the winter. Help by making a snug shelter for everything from bumblebees to beetles, and spiders to woodlice.

WHAT YOU WILL NEED:

Plastic mesh or chicken wire, about

1m x 1m.

Garden string/ wire/ twine

Flat piece of wood

HOW TO MAKE IT:

- 1** Curl the plastic mesh into a tube and tie it in place using four twists of plastic covered garden wire or string.
- 2** Take some dead twigs and poke them through the sides of the cylinder at the bottom. The twigs overlap to form a mesh which stops the leaves falling out of the bottom if you pick it up; it also stops the leaves touching the ground and helps to stop them getting damp.
- 3** Fill the cylinder with dead leaves.
- 4** Put a piece of old wood/hardboard on top to stop the rain getting in.
- 5** As the leaves in the Bug Hotel dry-out they will shrink, so try to keep some extra ones to top-up the tube.
- 6** Once you have made your hotel put it in a quiet corner of the garden - preferably somewhere in the shade. As the nights start getting colder, bugs will find your hotel and use it as a safe dry place to shelter and hibernate.



BUG MAKES

Make a mini-meadow



Next spring why not create a mini wildflower meadow in your backyard. Nectar rich flowers such as Bird's foot trefoil, Red clover and Greater knapweed are perfect for pollinators. Bees, flies, wasps, moths and butterflies are just some of the creatures you might find in your mini meadow next summer! So, get sowing!

WHAT YOU WILL NEED:

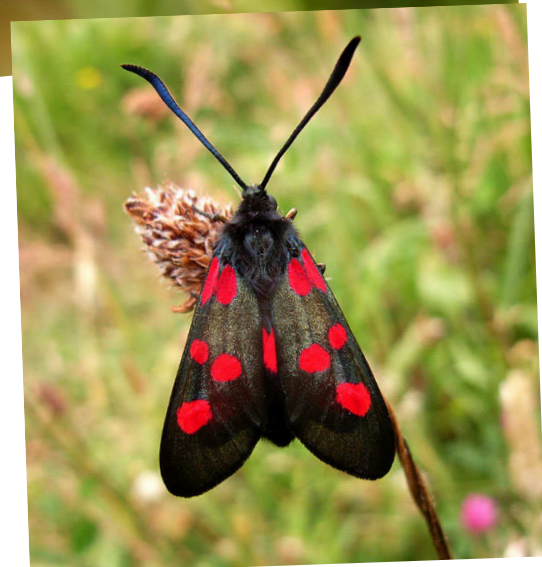
Spade—to clear top soil

3g of wildflower seeds (this should cover 1m²)

Watering can

HOW TO MAKE IT:

- 1** Sow the seeds in autumn or early spring. Scatter on bare earth (weed free) in full sun.
- 2** Do not improve the soil— these plants flourish on poor soil.
- 3** Once sown, lightly tread the seeds to bring them in contact with the soil. You do not want to bury them.
- 4** If rain is not forecast, water in lightly. Cut back/ strim and remove the seed heads in September.



BUG MAKES

Make a bee hotel



Hollow tubes are perfect for nesting solitary bees. These bees, unlike honey bees or bumblebees, are solitary, which means they live alone. They use the empty holes as a nest site for their young. They lay their eggs in the holes and seal them with a clump of chewed mud or leaf. It is worthwhile encouraging these beautiful bees into your garden as they are brilliant at pollinating flowers.

WHAT YOU WILL NEED:

- Tubes – hollow plant stems or bamboo canes
- Garden twine or string
- Saw or Stanley knife to cut the canes
- A nail or hook to attach the bee hotel to the shed with

HOW TO MAKE IT:

- 1 Prepare the tubes: ask an adult to help you cut the hollow tubes into 10-20cm long sections.
- 2 Tie a bundle of tubes together with garden twine or string.
- 3 Hang them up in a sunny but sheltered area of the garden at about five feet above the ground for example, on the side of a shed or on a trellis.
- 4 Observe and enjoy. In spring solitary bees may use the nest holes - it may take them a year to find it. Spiders and other minibeasts may use your hotel in the meantime.



BUG MAKES DEAD WOOD PILE FOR BEETLES



Piles of dead, damp, rotten wood are a beetle's idea of heaven! Plus, lots of other insects and spiders will use it as a place to shelter and feed. Dead wood is not a common sight in the countryside anymore because it gets cleared away to make woodlands look tidy. This means the beetles and other insects lose their homes.

WHAT YOU WILL NEED

Mixture of wood – sticks, logs and bark

Leaf litter – dead leaves and twigs

HOW TO MAKE IT:

- 1 Make a pile of dead wood and different sized logs with the bark on. Any size is fine but the bigger the better for beetles!
- 2 Add a pile of leaf litter to attract even more creatures, such as hibernating toads or hedgehogs.
- 3 To create perfect conditions for the beetles let the wood rot naturally in a damp, shady area.
- 4 You will need to add a new log each year as the old ones decay.
- 5 Make sure you keep your pile in a shady spot where it can stay dark and cool.



LET US KNOW HOW YOU
GET ON BY SENDING
A PHOTO OF YOUR
AND YOUR DEAD
WOOD PILE TO
INFO@BUGLIFE.ORG.UK.