

B-Lines

Putting rivers of bees, flowers and wildlife back into the countryside



© Jan Mold



© Roger Key



© Denis G

© Paul Evans

The Importance of Pollinators

- One out of every three mouthfuls of our food depends on pollination
- The benefits of insect pollinators to the British Economy are valued at £400 million

The Problem

- Bumblebees, solitary bees, moths and butterflies, many of which pollinate our crops are in serious decline due to loss of habitat
- Much of this is a consequence of the loss of 3,000,000 ha of flower-rich habitat since the 1940s

The Solution

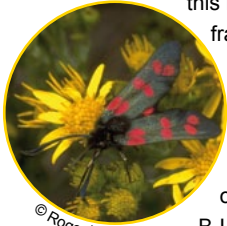
- Farmers in England have helped to create about 10,000 ha of flower-rich habitat through agri-environment schemes – but a lot more is needed
- Creating new wildflower habitats will increase bumblebee, butterfly and other insect numbers by up to tenfold



What are B-Lines? Strips of wildflower habitat which link existing wildlife areas together to create a network of wildflower-rich lines across our countryside.

But why do we need B-Lines?

Imagine trying to travel around Britain without our road and rail network. Or imagine if nine out of every ten miles of road just didn't exist. Well for much of our wildlife this is the reality - it is confined to small fragments of habitat and unable to move across the countryside.



© Roger Key

What is happening?

Buglife is currently working with a number of wildlife and farming organisations to develop B-Lines. Supported by the Co-operative's Plan Bee Campaign a pilot project - 'Bee-Roads' - is being taken forward in Yorkshire.

Work includes:

- Mapping and creating pilot B-Lines across Yorkshire
- Working with partners and farmers to promote pollinator friendly farming across Yorkshire and Britain
- Developing new ways of funding and supporting farmers to develop new B-Lines across Britain



© Robert Goodison



How a network of B-Lines might look

© Roger Key

How can you help? – If you have land

- If you have land in Yorkshire and want to get involved in the pilot project please let us know
- Consider signing up for a paid wildflower Environmental Stewardship option www.naturalengland.org.uk or voluntary options under the Campaign for the Farmed Environment www.cfeonline.org.uk
- Or simply manage an area of land as wildflower habitat

How can you help? – If you have no land

- Pledge your support and learn more about helping pollinators online

See www.buglife.org.uk for further information and updates on the project

Contact: info@buglife.org.uk

See www.co-operative.coop/planbee for more information on The Co-operative's Plan Bee Campaign



Buglife – The Invertebrate Conservation Trust

First Floor, 90 Bridge Street, Peterborough, PE1 1DY

Telephone: 01733 201210 Email: info@buglife.org.uk

Registered in England at First Floor, 90 Bridge Street, Peterborough, PE1 1DY.

Company no. 4132695. Registered charity no. 1092293. Scottish charity no. SC040004.

